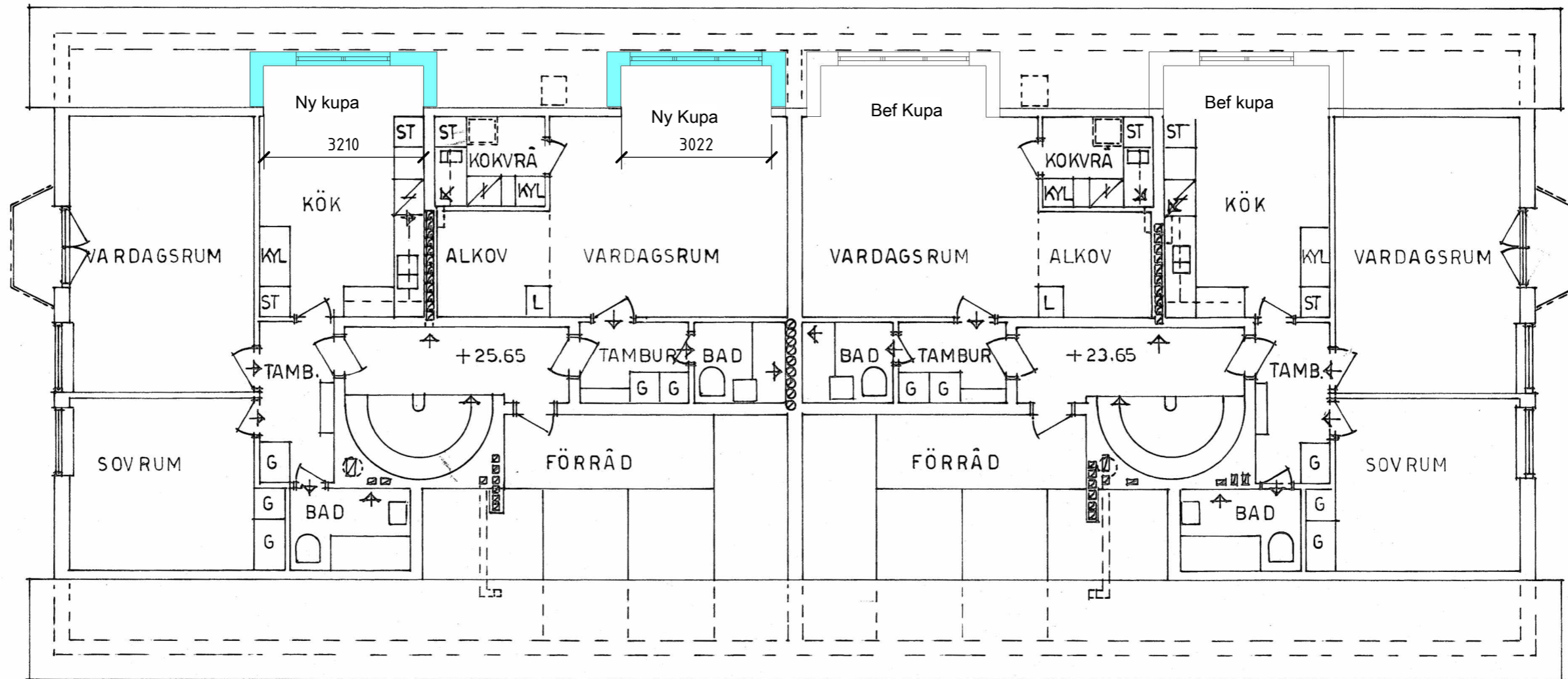


2 RUM + KÖK = 58.4 M<sup>2</sup>

1 RUM + KOKVRÅ = 35.5 M<sup>2</sup>

1 RUM + KOKVRÅ = 35.5 M<sup>2</sup>

2 RUM + KÖK = 58.4 M<sup>2</sup>



2026-04-14 10:46:28 K:\Assessorn\accessorn.rvt

26-04-14		
Assessorn N:a Kyrkog		
Hus D Vindsplan		
SKALA	NUMMER	BET
A1	A00-01-01	
A3 1:100		